



Mammoth Lakes Fire Protection District
 PO Box 5, 3150 Main Street, Mammoth Lakes, CA 93546
 (760) 934-2300
 www.mlfd.ca.gov

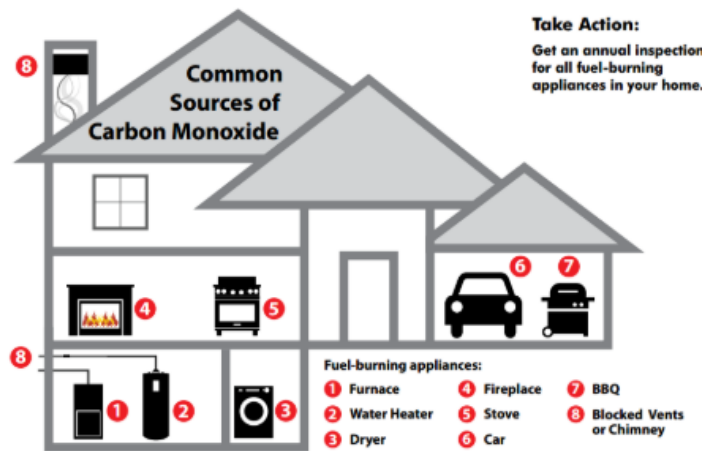
FOR IMMEDIATE RELEASE
 March 29, 2023

CONTACT:
 Natalie Morrow: (760) 924-9002

CARBON MONOXIDE INFORMATION

FACTS

- ⚠ A person can be poisoned by a small amount of CO over a longer period of time or by a large amount of CO over a shorter amount of time.
- ⚠ In 2010, U.S. fire departments responded to an estimated 80,100 non-fire CO incidents in which carbon monoxide was found, or an average of nine calls per hour.



CARBON MONOXIDE (CO) POISONING

- CAN'T BE SEEN
- CAN'T BE SMELLED
- CAN'T BE HEARD
- CAN BE STOPPED

Often called the silent killer, carbon monoxide is an invisible, odorless, colorless gas created when fuels (such as gasoline, wood, coal, natural gas, propane, oil, and methane) burn incompletely. In the home, heating and cooking equipment that burn fuel can be sources of carbon monoxide. Every home should have CO alarms.

1. **During and after a snowstorm, make sure vents for the dryer, furnace, stove, and fireplace are clear of snow build-up.**
2. CO alarms should be installed in a central location outside each sleeping area and on every level of the home and in other locations where required by applicable laws, codes, or standards. For the best protection, interconnect all CO alarms throughout the home. When one sounds, they all sound.
3. Follow the manufacturer’s instructions for placement and mounting height.
4. Choose a CO alarm that has the label of a recognized testing laboratory.
5. Test CO alarms at least once a month; replace them according to the manufacturer’s instructions.
6. If the audible trouble signal sounds, check for low batteries. If the battery is low, replace it. If it still sounds, call the fire department.
7. If the CO alarm sounds, immediately move to a fresh air location outdoors or by an open window or door. Make sure everyone inside the home is accounted for. Dial 9-1-1 for help from a fresh air location and stay there until emergency personnel arrive.
8. If you need to warm a vehicle, remove it from the garage immediately after starting it. Do not run a vehicle or other fueled engine or motor indoors, even if garage doors are open. Make sure the exhaust pipe of a running vehicle is not covered with snow.
9. Gas or charcoal grills can produce CO — only use outside.
10. A generator should be used in a well-ventilated location outdoors away from windows, doors and vent openings.