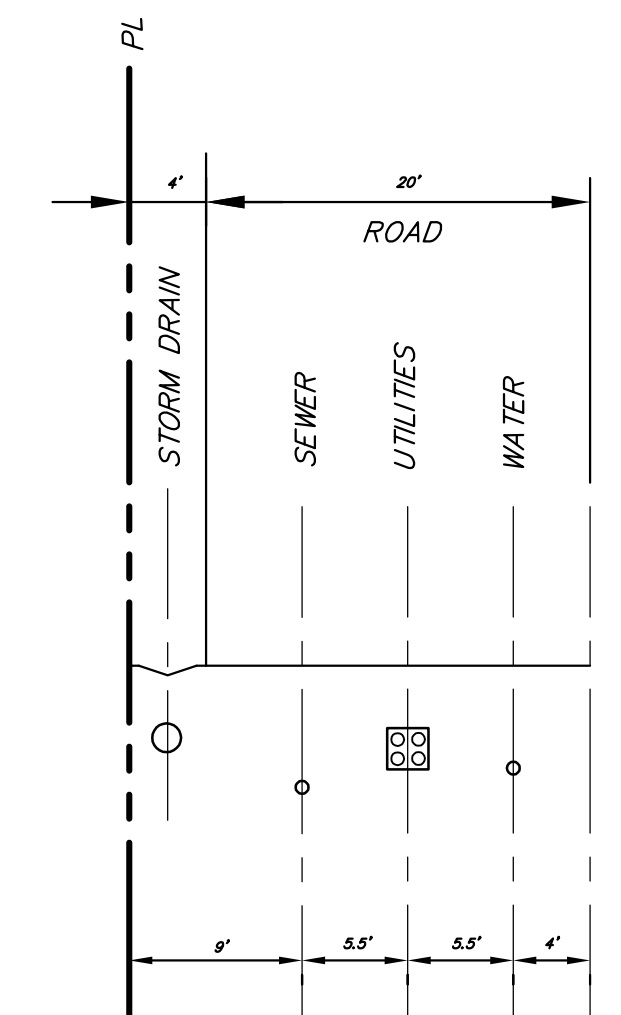
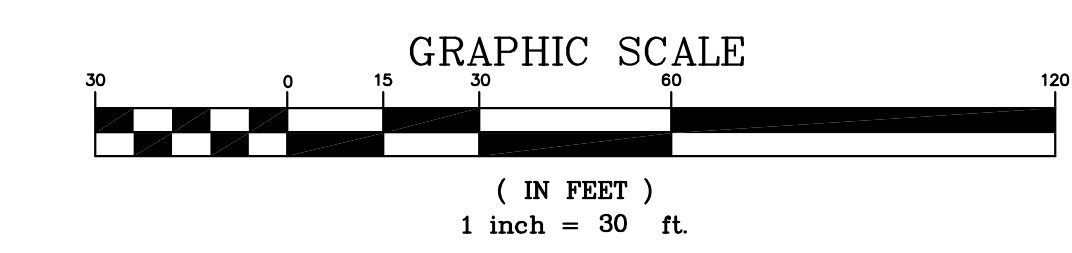


NOTE: THERE EXIST SPARSELY SCATTERED TREES WITHIN THE 30% SLOPE DELINEATION LINES. THESE TREES ARE REMOTE FROM ANY POTENTIAL BUILDING SITES AND ARE NOT SHOWN HEREON. TREES ARE SHOWN ONLY WHEN THERE IS



SECTION A-A
TYPICAL UTILITIES DETAIL
SCALE: 1"=10'



PREPARED AND SUBMITTED BY:
PAUL EDWARD ROTEN DATE 04/11/2011
P.E. C 56891 EXP. 6-30-11

CONCEPTUAL SITE DRAINAGE AND UTILITIES
VESTING TENTATIVE PARCEL MAP AND USE PERMIT 10-001
 BEING A SUBDIVISION OF LLA PARCEL 3 OF LOT LINE ADJUSTMENT 08-001
 IN THE TOWN OF MAMMOTH LAKES, COUNTY OF MONO, STATE OF CALIFORNIA

trid/holmes assoc.
civil engineering
land surveying

post office box 1570
248 1/2 highway 16, st. 202
MAMMOTH LAKES, CA 93246
phone (760) 934-7986
fax (760) 934-5619
e-mail trid@thainc.com

873 north main st. suite 100
BISHOP, CA 93514
phone (760) 873-4214
fax (760) 873-8024
e-mail bishop@thainc.com

777 woodside rd. suite a
REDWOOD CITY, CA 94061
phone (650) 366-0216
fax (650) 366-0288
e-mail st@thainc.com

513 hinchin avenue, suite c
NAPA, CA 94556
phone (707) 251-9170
fax (707) 251-8138
e-mail napa@thainc.com

555 charro st. suite a
SAN LUIS OBISPO, CA 93405
phone (805) 544-8908
fax (805) 544-8932
e-mail so@thainc.com

Copyright (C) 2010 by
Trid/Holmes, Associates
All Rights Reserved. This
Document is Intended
Only for Use on the
Project Specified in the
Title Block. Any
Reproduction of this
Document or Portion of
this Document Without
the Express Written
Consent of Trid/Holmes,
is Prohibited.

REVISIONS	BY

DATE 04/11/2011
SCALE AS SHOWN
DRAWN SR/GP/JEP
JOB NO. 332.013
DWG. TPM 10-001.dwg
SHEET 3
OF 4 SHEETS

K:\01_Mammmoth\112-011\10-001\TPM 10-001.dwg - 2/18/10 - P.18/28 - 2/24/2011 - P.18/28 - 2/24/2011